

AFRIX Telecom Mozambique Next-Generation Network Infrastructure & Regional Connectivity

Strategic Infrastructure Expansion & Resilient Connectivity Solutions



Presentation Overview

- Protected Fibre Ring Between Data Centres
- IPT Protected Solution
- Layer 2 Connectivity: Maputo – South Africa (via Swaziland)
- Strategic Business Impact



Fibre Ring: Strategic Objective

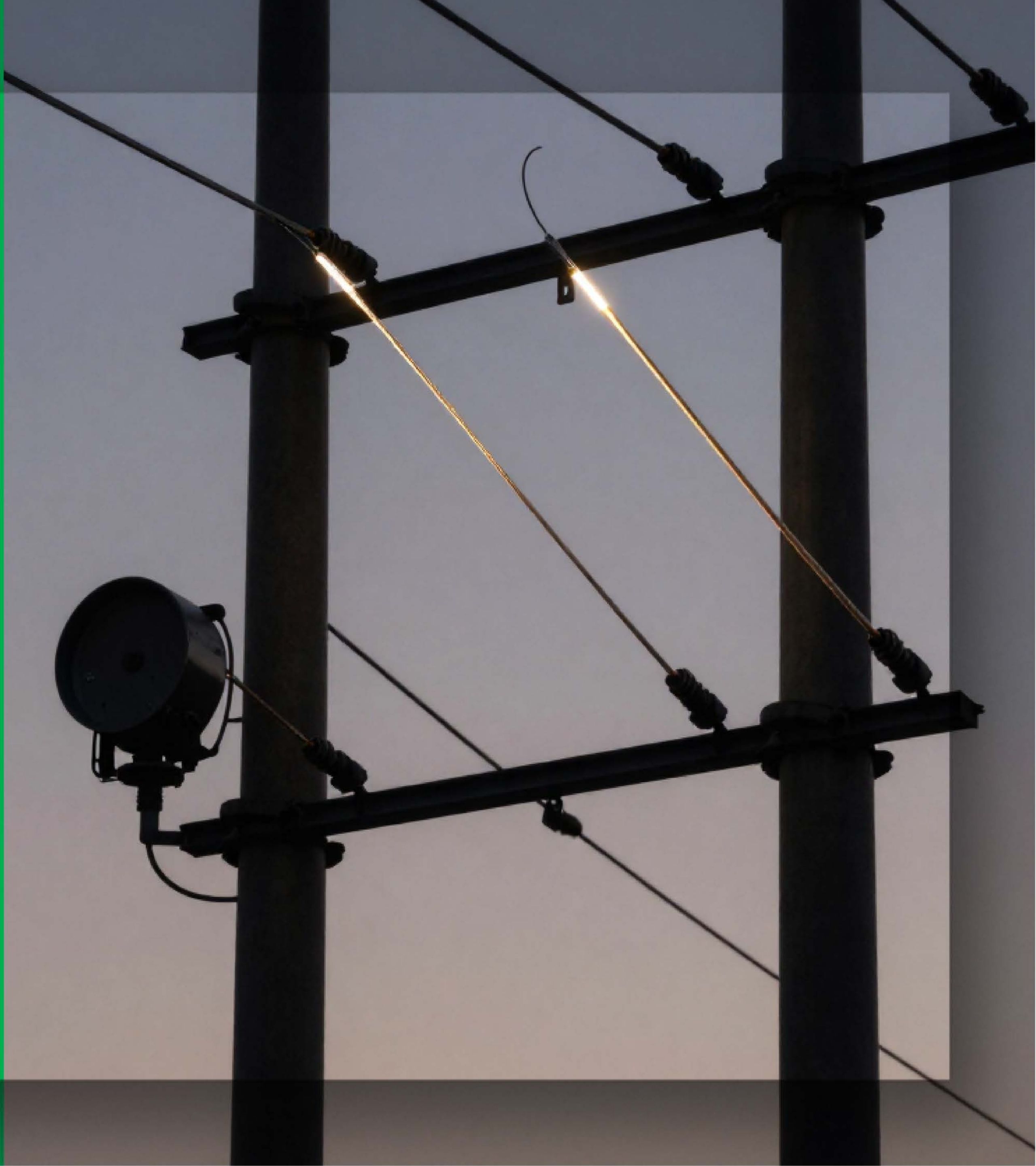
Objective:

- Establish a resilient protected fibre ring interconnecting AFRIX data centres in Mozambique.



Fibre Ring: Infrastructure & Technical Features

- Interconnection of Raxio, Mosix, and Icolo
- Redundant ring topology (automatic failover)
- High-capacity backbone
- Low latency
- Overhead fibre infrastructure deployment



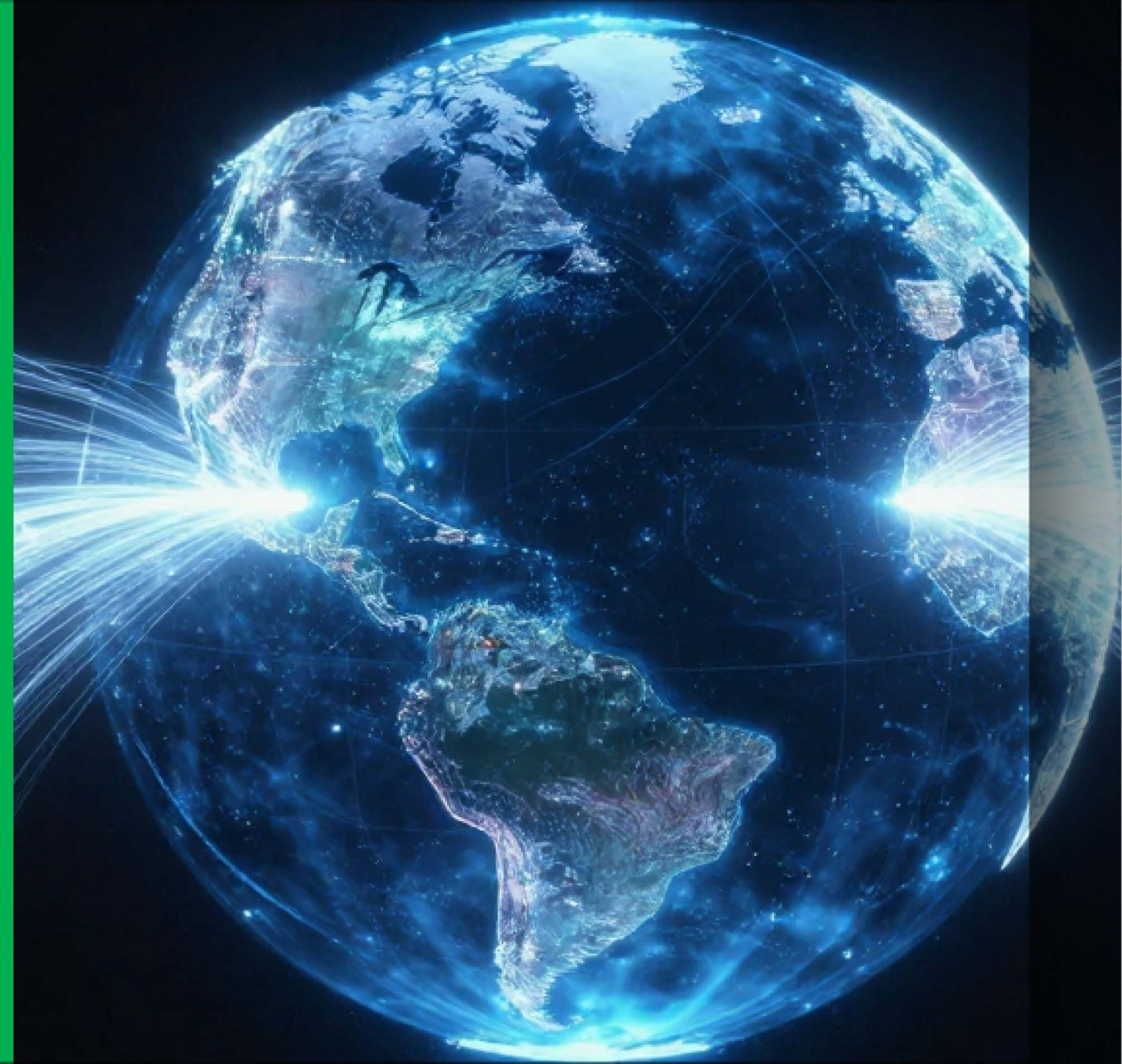
Fibre Ring: Business Benefits

- Improved reliability
- Enhanced disaster recovery
- Increased uptime & service continuity
- Scalable infrastructure



IPT Protected Solution: Objective

Deploy a fully protected IP Transit solution ensuring uninterrupted connectivity.



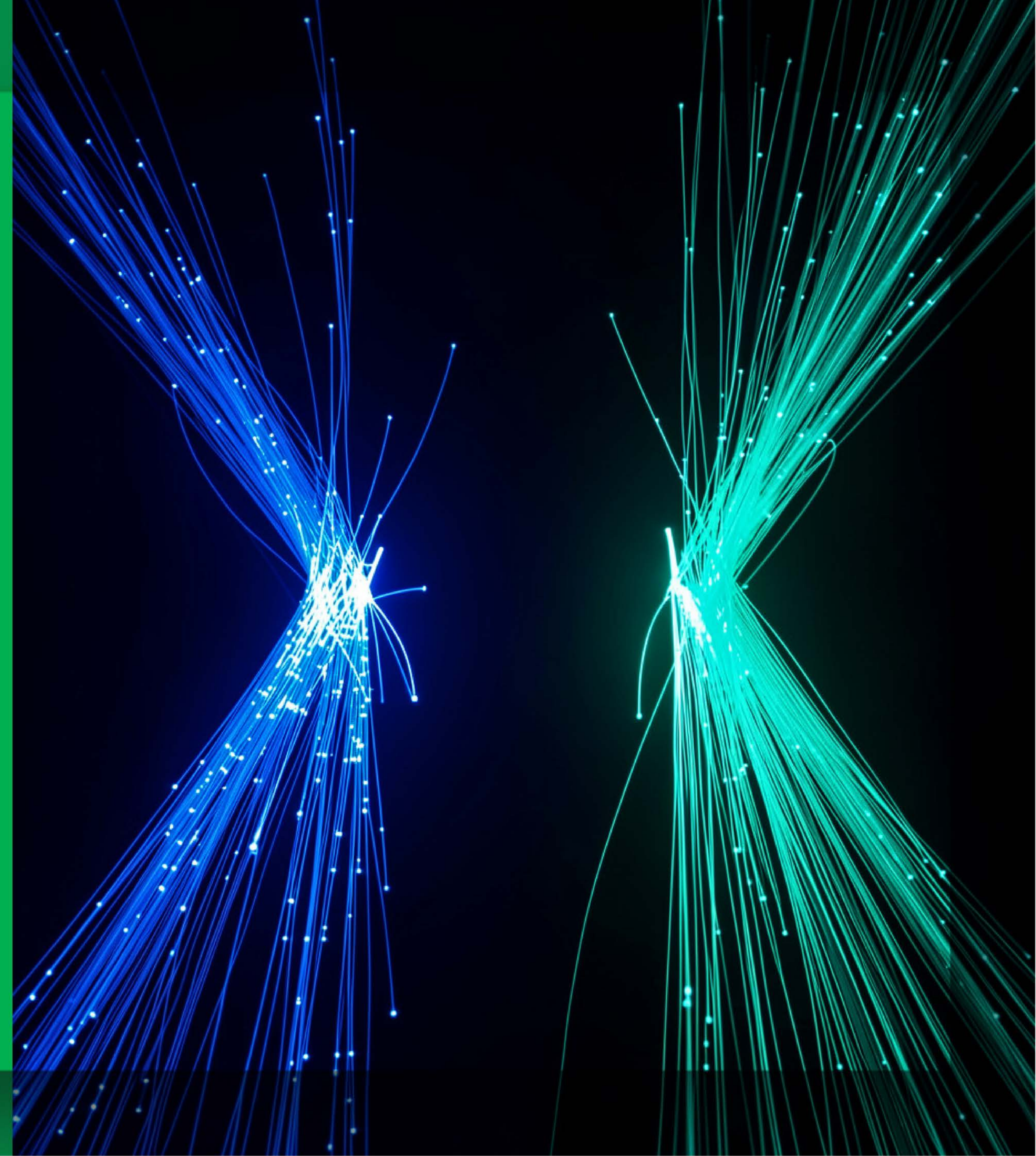
IPT Protected Solution: Key Features

- Dual upstream providers
- BGP-based automatic route failover
- Optimized traffic engineering
- High availability architecture
- Enterprise-grade SLA support



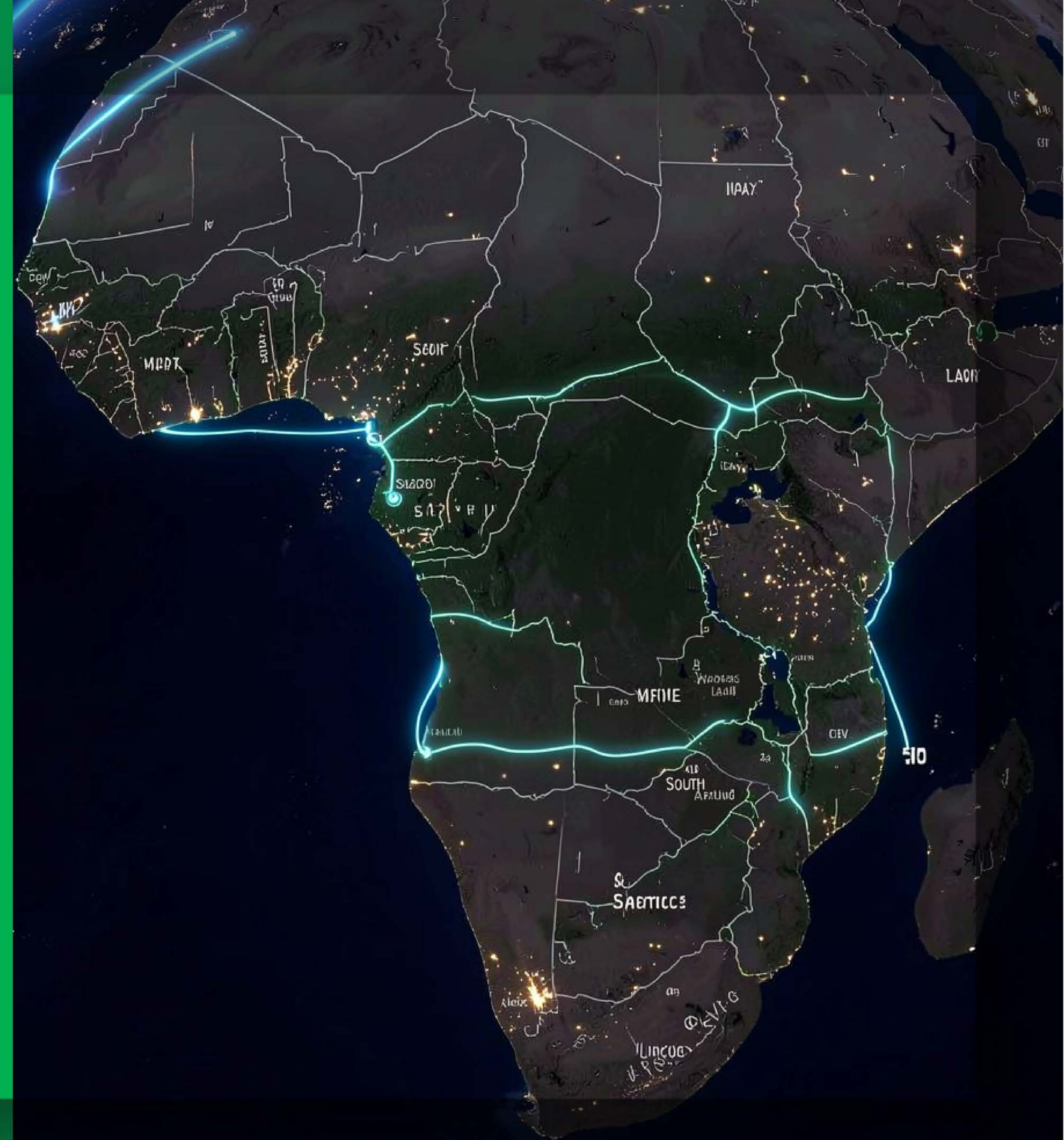
IPT Protected Solution: Benefits

- Reduced service disruption risk
- Improved international reachability
- Enterprise reliability



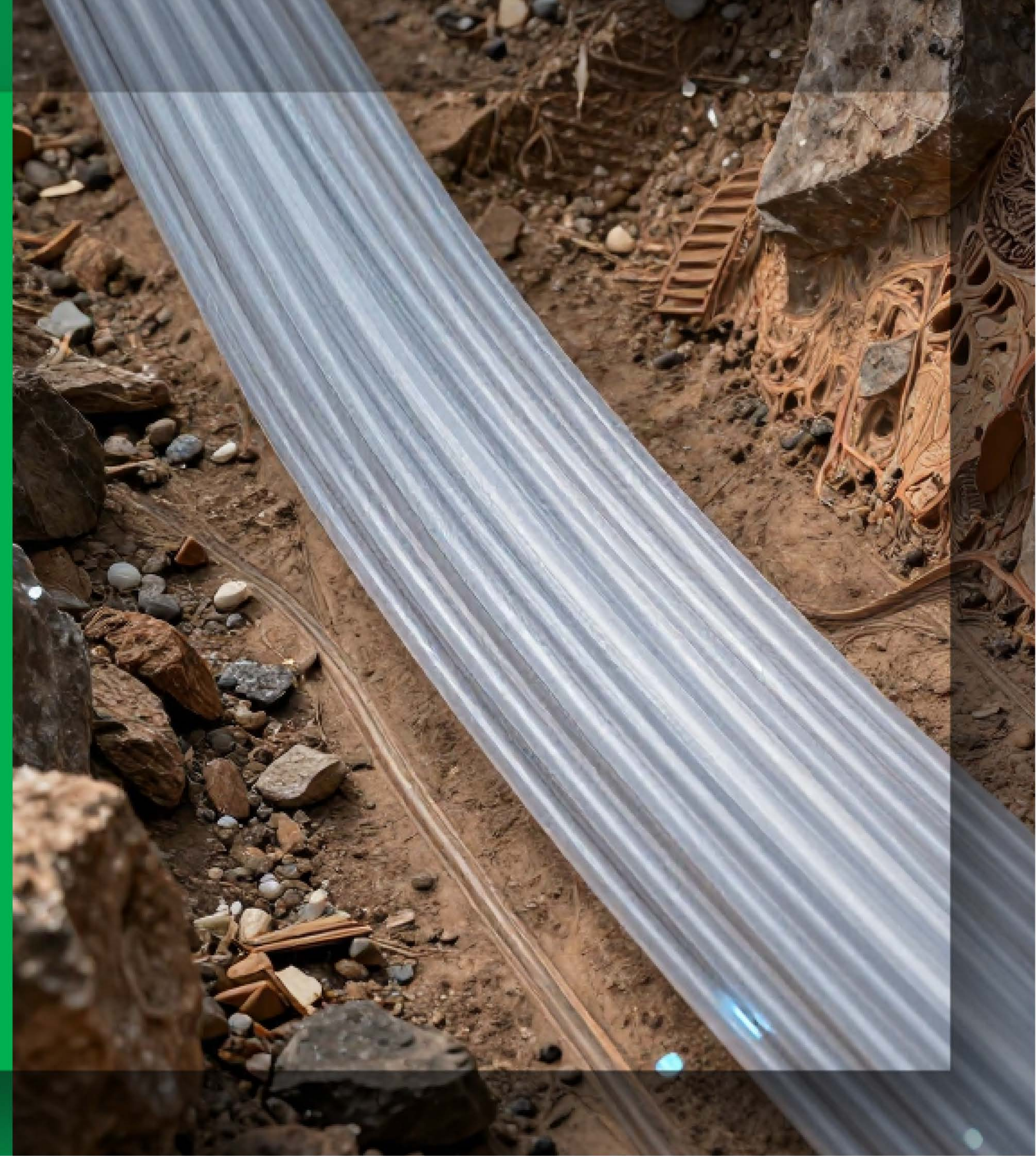
Layer 2 Connectivity: Strategic Objective

Provide secure Layer 2 connectivity between Maputo and South Africa via Swaziland.



Layer 2 Connectivity: Technical Features

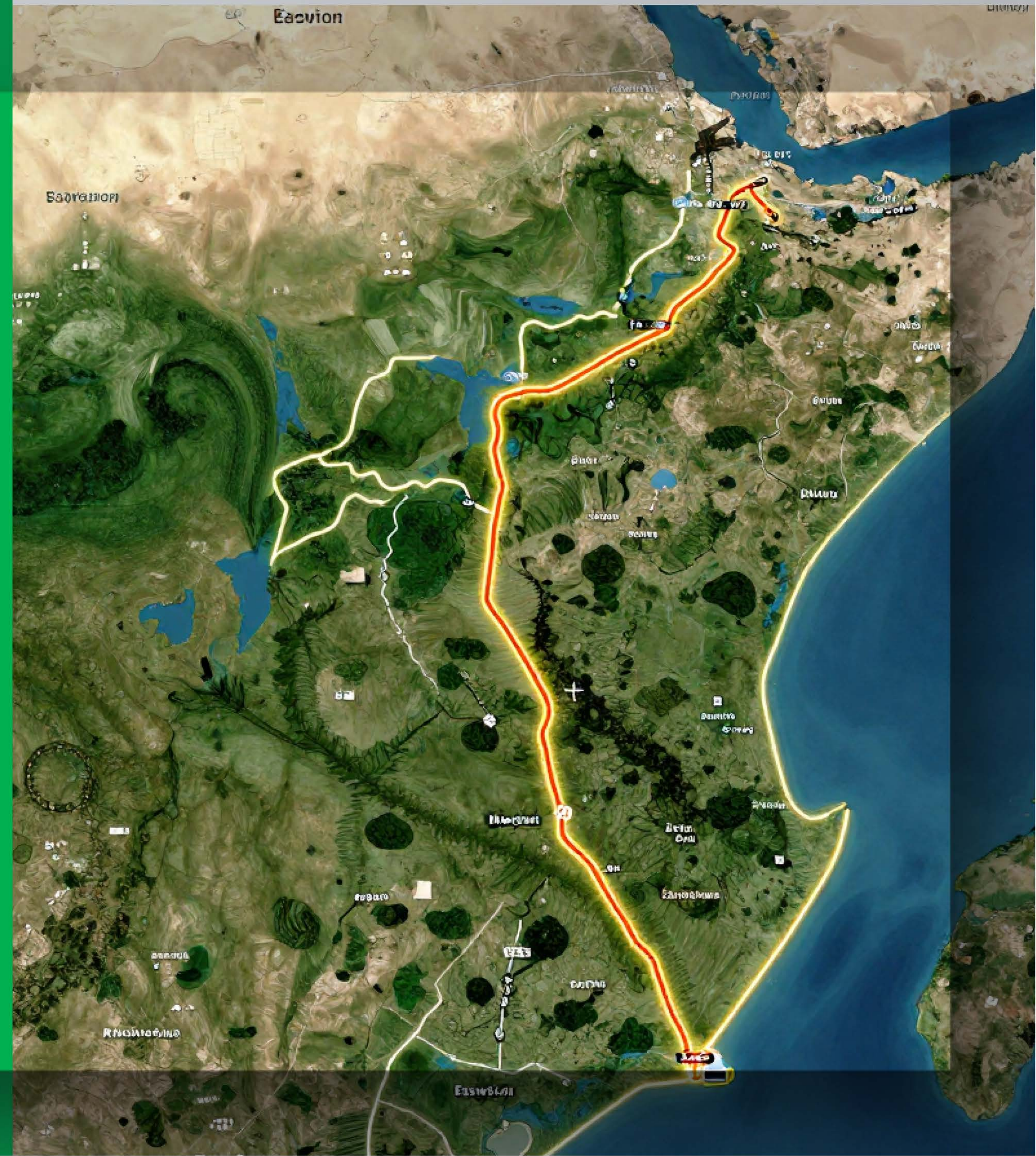
- Dedicated Layer 2 cross-border circuit
- Terrestrial routing
- Low latency & high throughput
- Scalable bandwidth



Regional Route Visualization

Route:

Maputo → Swaziland → South Africa



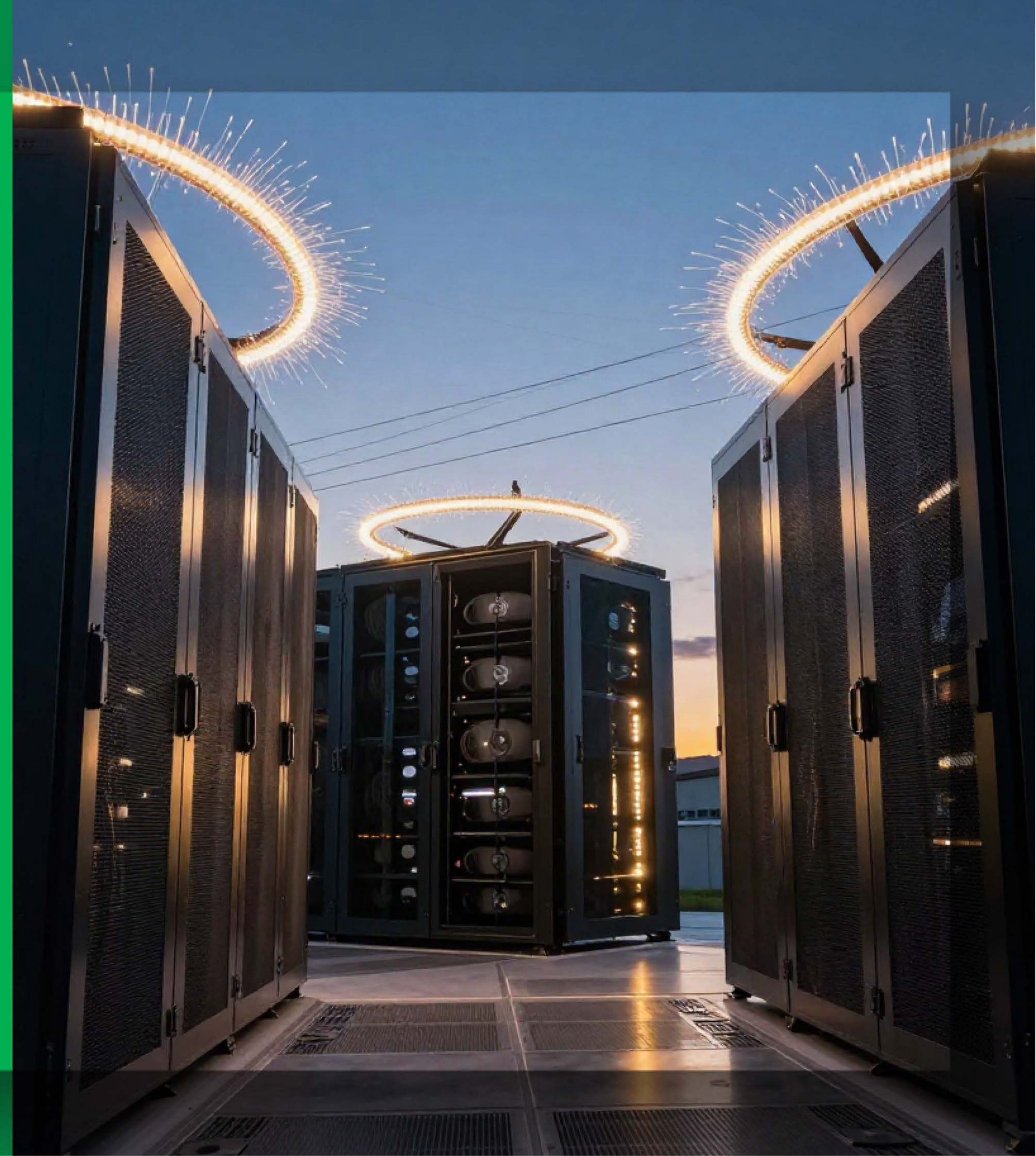
Infrastructure Locations & Service Details

Data Centres:

- Raxio
- Mosix
- Icolo

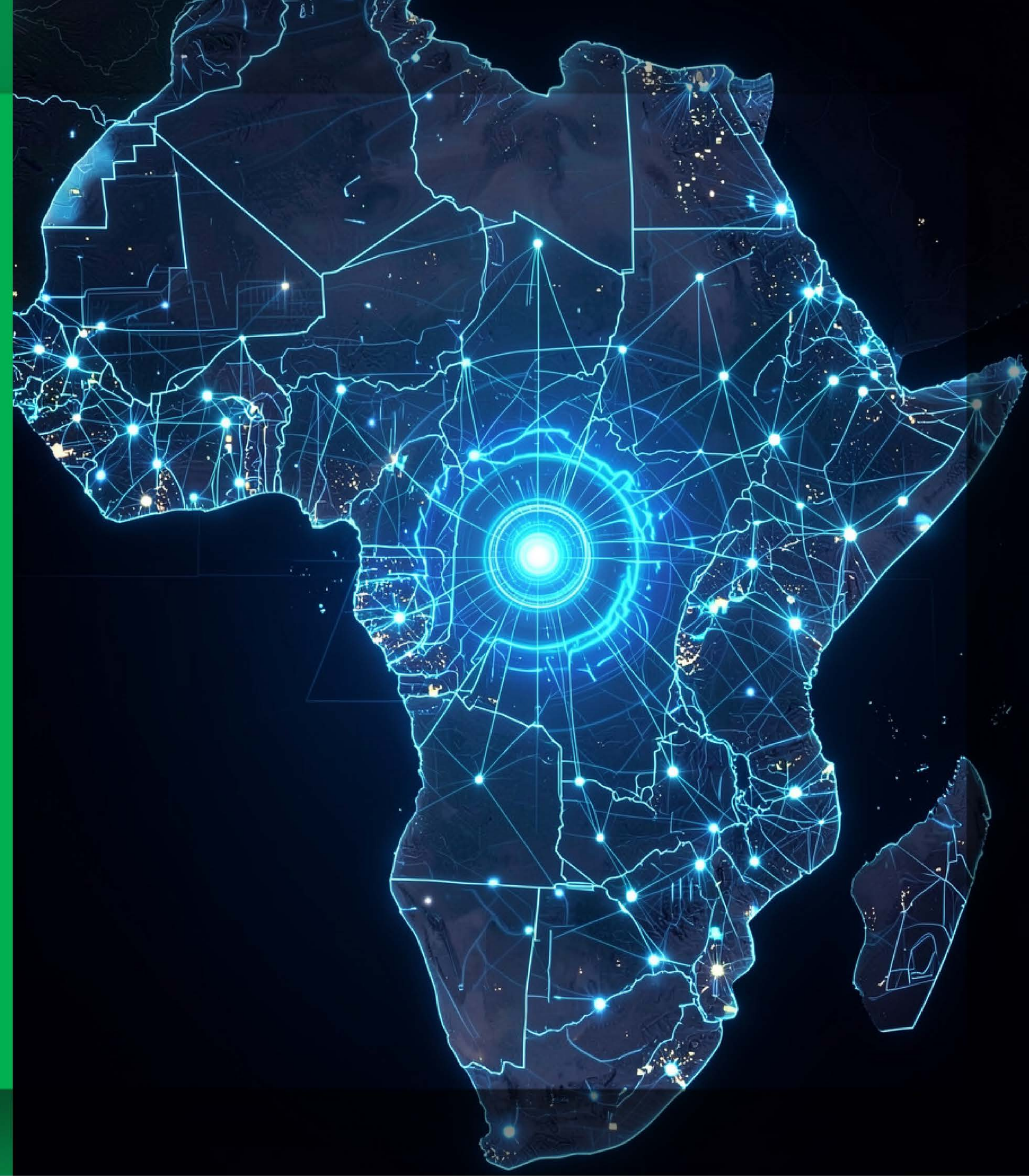
Service Type: Protected Fibre

Deployment: Overhead Infrastructure

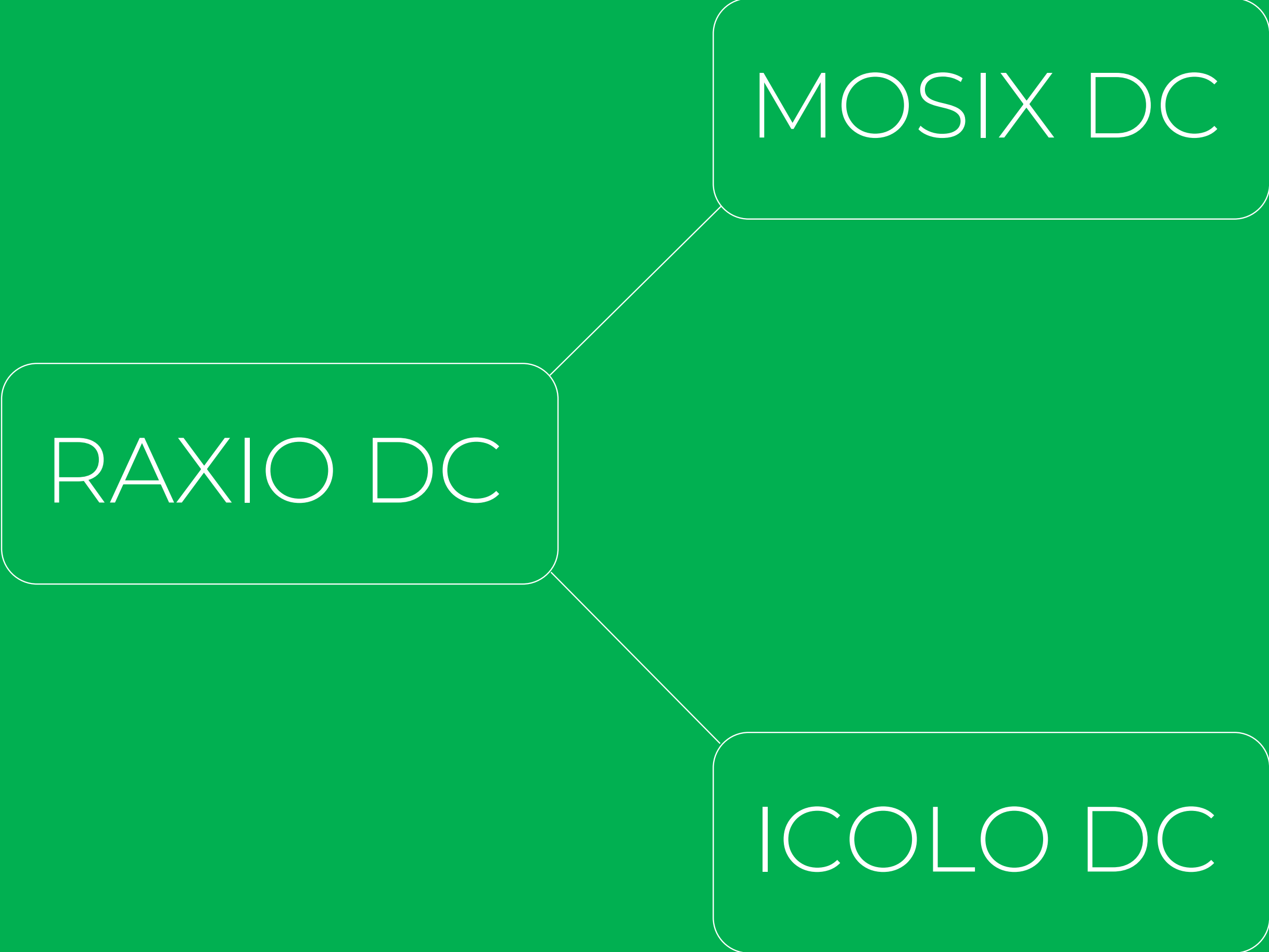


Strategic Business Impact

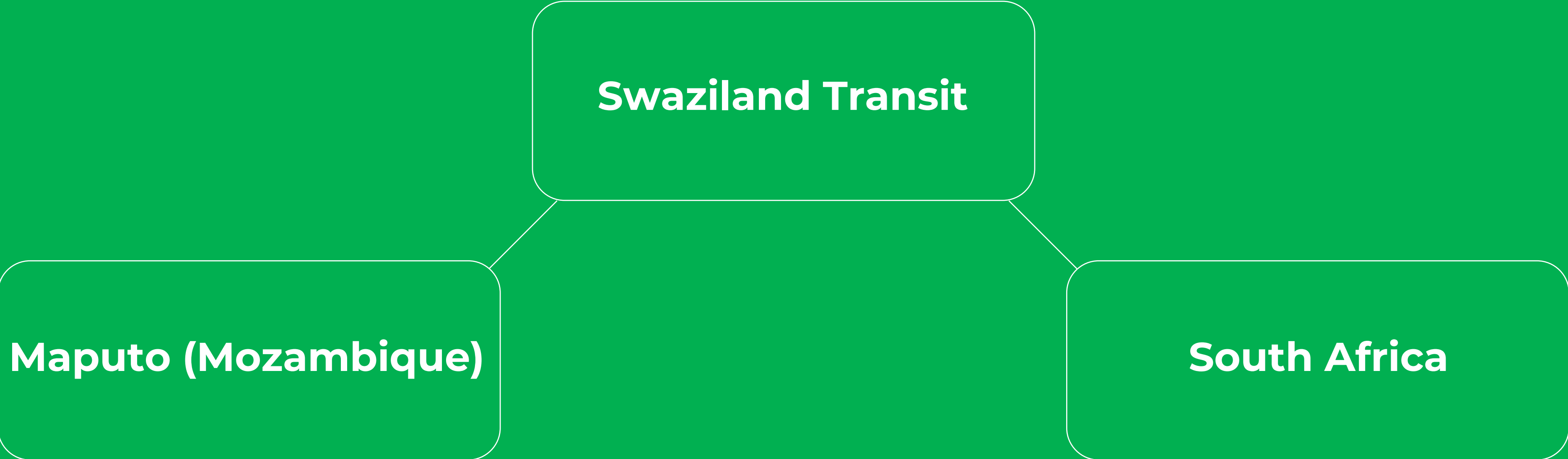
- Strengthens AFRIX position in Mozambique
- Enhances Southern African regional integration
- Enables enterprise-grade reliability
- Supports cloud, ISP & wholesale growth
- Future-ready infrastructure platform



Protected Fibre Ring Topology – Overhead Infrastructure



Layer 2 Route: Maputo → Swaziland → South Africa



AFRIX Telecom Mozambique

Building Resilient Infrastructure for a Connected
Southern Africa

